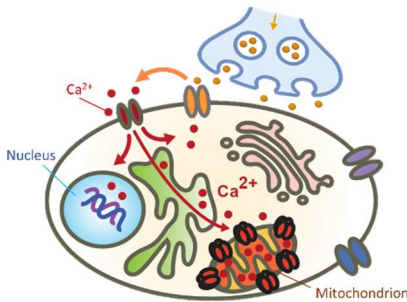




POSITION AVAILABLE
@ Neuroscience Institute - CNR
&
Dept. Biomedical Science - University of Padua

A research position (Assegno di ricerca) is available in the lab of Mitochondrial Calcium Signaling led by Prof. Rosario Rizzuto, to investigate the involvement of mitochondria and Ca^{2+} signals in the etiology of human pathology.



The project will focus on the study of calcium signaling and mitochondria function in Ryanodine Receptor type 1 (RyR1)-related core myopathies and in hereditary motor neuropathy. The candidate will work in a highly dynamic environment with access to state-of-the-art technologies and up-to-date instrumentation for cellular and molecular studies and will have the opportunity to implement a wide range of experimental methodologies, including calcium imaging, mitochondria signaling & metabolism, as well as biochemical and gene expression analysis. The work will be

performed under the supervision of Dr. Giorgia Pallafacchina, researcher at the Neuroscience Institute – CNR and Dept. Biomedical Science of the University of Padua.

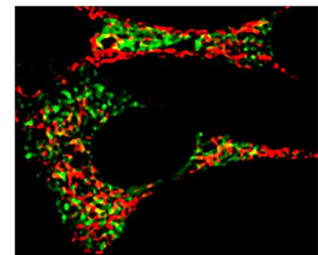
Basic knowledge of cellular and molecular biology and related procedures would be preferred. PhD is not required.

The application form is available at:

http://bandi.urp.cnr.it/doc-assegni/documentazione/15202_DOC_IT.pdf

https://bandi.miur.it/bandi.php/public/fellowship/id_fellow/253940

Call ID: **IN-013-2023-PD - Prot 402515**



Deadline for application: January, 8th 2024

For all inquiries and more information, contact: giorgia.pallafacchina@unipd.it
giorgia.pallafacchina@cnr.it

CNR - Istituto di Neuroscienze
email: segreteria@in.cnr.it – pec: protocollo.in@pec.cnr.it
Sede principale: Via Moruzzi 1, 56124 Pisa – tel. 050 3153207

Viale G. Colombo 3,
35131 Padova
tel.: 049 8211226

Via R. Follereau 3,
20854 Veduggio al Lambro
tel.: 02 64488341/330

Cittadella universitaria di Monserrato
S.S. 554 Km 4,5, 09042 Monserrato
tel.: 070 6754070

Via Volturmo 39/E,
43125 Parma
tel.: 0521 903881

PARTITA IVA N. 02118311006 - CODICE FISCALE N. 80054330586